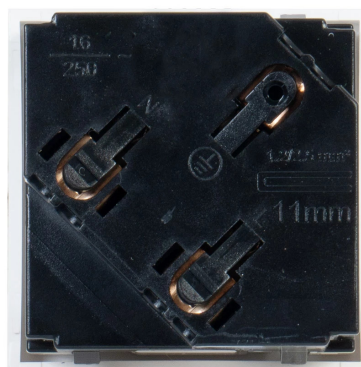
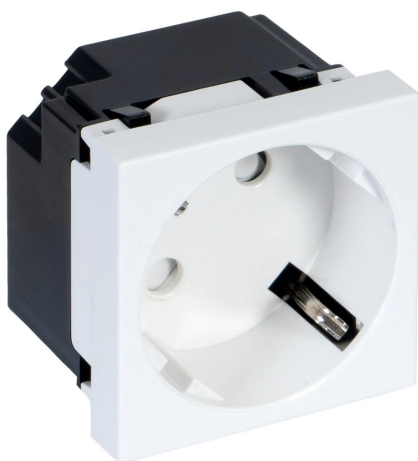


CONNECTION AND WIRING / CONNECTION PANELS / MODULARS

## WP-44S

TWO-POLE PLUG-IN CONNECTION PANEL WITH GROUND



✓ Easy installation

ESPECIALLY RECOMMENDED IN:



All sectors

### DESCRIPTION

Connection panels for audiovisual installations, classrooms, conference rooms, etc. Modular connection panel system with different connectors.

TECHNICAL CHARACTERISTICS

FEATURES	Bipolar socket with earth. 250 V AC, 16 A. 1 connection panel. Screw terminals. Safety shutter.
COLOUR	White (RAL 9003)
DIMENSIONS	45 x 45 x 40.6 mm depth